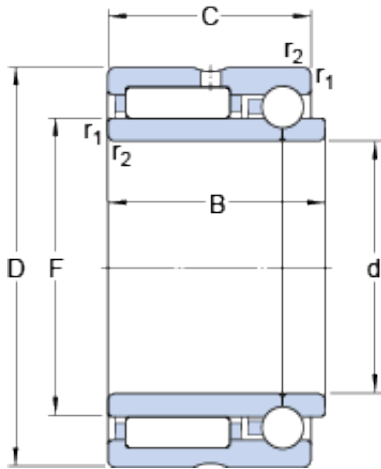




GENERAL BEARING IMPORT COMPANY



30 mm x 47 mm x 25 mm SKF NKIB 5906
 AUSTRALIAN Bearing 30*47*25

Bearing No. NKIB 5906

NKIB 5906 Bearing 2D drawings and 3D CAD models

Size	47x30x25 mm
Bore Diameter	47 mm
Outer Diameter	30 mm
Width	25 mm
d	30 mm
D	47 mm
B	25 mm
C	23 mm
F	35 mm
r _{1,2} - min.	0.3 mm
d _a - min.	32 mm
D _a - max.	45 mm
r _a - max.	0.3 mm
Basic dynamic load rating, radial direction - C	25.5 kN
Basic static load rating, radial direction - C ₀	39 kN
Basic dynamic load rating, axial direction - C	4.5 kN
Basic static load rating, axial direction - C ₀	6.3 kN
Fatigue load limit, radial direction - P _u	4.6 kN
Fatigue load limit, axial direction - P _u	0.268 kN
Reference speed	11000 r/min
Limiting speed	13000 r/min



GENERAL BEARING IMPORT COMPANY

Category	Roller Bearings
Inventory	0.0
Manufacturer Name	SKF
Minimum Buy Quantity	N/A
Weight / Kilogram	0.152
EAN	7316577015549
Product Group	B04144
$r_{1,2}$ min.	0.3 mm
d_a min.	32 mm
D_a max.	45 mm
r_a max.	0.3 mm
Basic dynamic load rating, radial direction C	25.5 kN
Basic static load rating, radial direction C_0	39 kN
Basic dynamic load rating, axial direction C	4.54 kN
Basic static load rating, axial direction C_0	6.32 kN
Fatigue load limit, radial direction P_u	4.65 kN
Fatigue load limit, axial direction P_u	0.268 kN
Mass bearing	0.15 kg